



Uhlmann & Zacher Plugin



U&Z Uhlmann & Zacher

To secure your buildings with access control using U&Z electronic locks, we offer you a centralised online solution optimised for IP PoE and without wiring.

The Uhlmann & Zacher plugin is implemented using Genetec's open RIO protocol and is based on Genetec's Security Center platform. The user-friendly web interface allows for easy and flexible configuration of your site operations.

This Uhlmann & Zacher integration benefits from all the access control technologies of the Genetec Synergis module (events, Event-To-Action, access rules, calendars, etc.).

Vertical application

- High Schools & Universities
- Tertiary (Offices & Banks)
- Hospitals



Compatible version

- Security Center 5.9
- Security Center 5.10
- Security Center 5.11

Licenses

- **ADX-UZ-BASE**

Uhlmann & Zacher software and one (1) license to integrate Uhlmann & Zacher locks into the Genetec™ Security Center unified platform.

- **ADX-UZ-LOCK**

One (1) licence for the integration of one (1) Uhlmann & Zacher lock in the Uhlmann & Zacher ADX-UZ-BASE software.

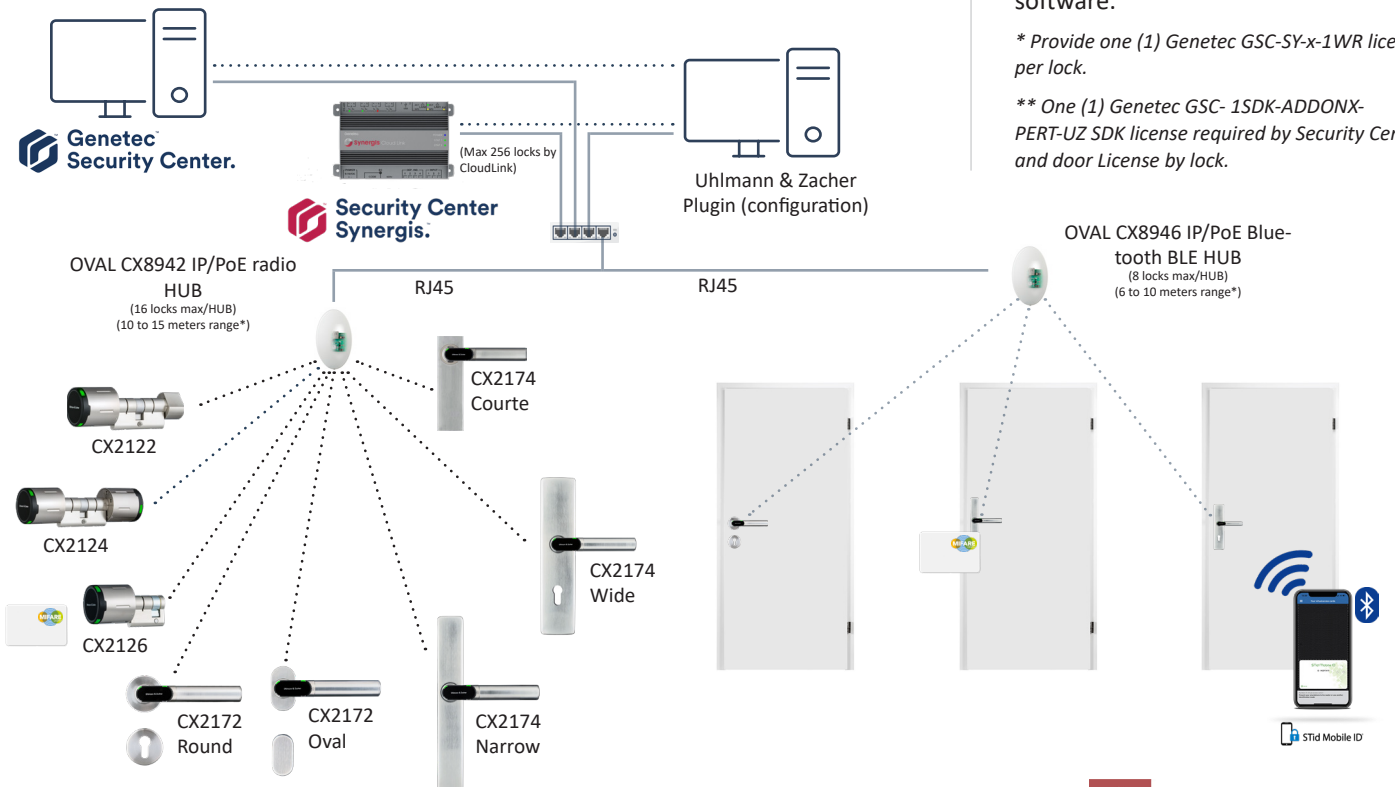
** Provide one (1) Genetec GSC-SY-x-1WR license per lock.*

*** One (1) Genetec GSC-1SDK-ADDONX-PERT-UZ SDK license required by Security Center and door License by lock.*



Overview

Technical diagram



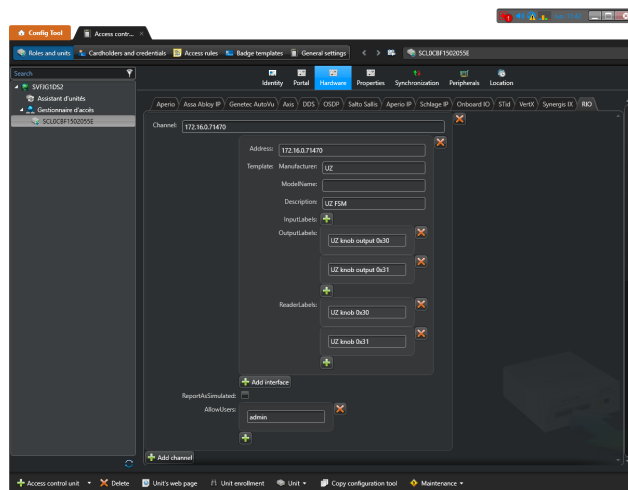
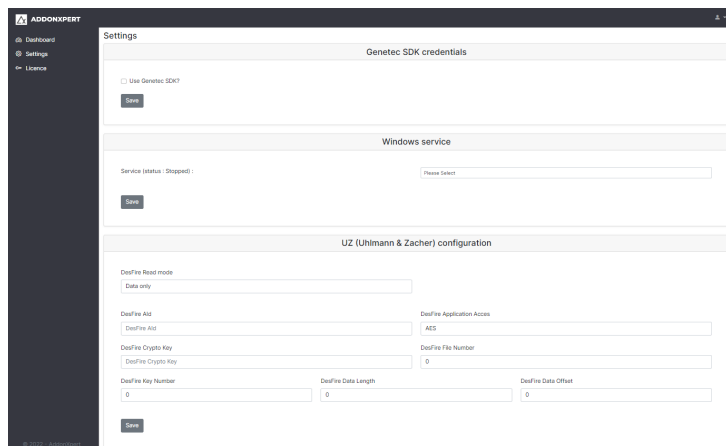
** according to the architecture of the building*

Application

Plugin configuration

The configuration of the Uhlmann & Zacher integration by its web page and Config Tool offers the following features:

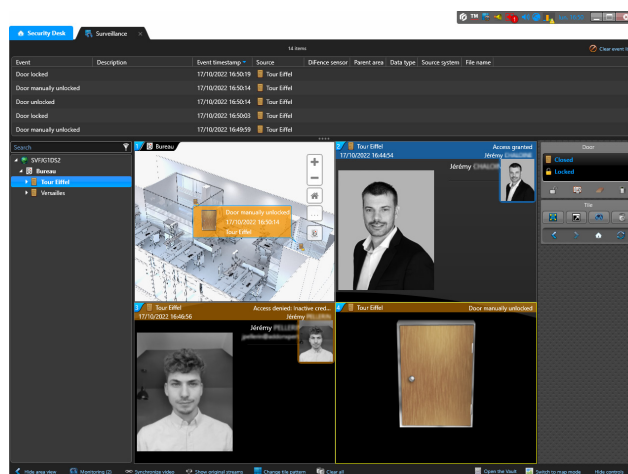
- Communication with IP/PoE HUBS (Radio and Bluetooth BLE)
- Unlimited lock and lever handle management
- Management RFID technologies
- Management of users and credentials
- Management of openings and closings by calendar
- Management of the “Office” mode



Operational use

The UZ integration leverages the unification offered by the Genetec Security Center platform:

- Real-time event tracking
- Event-action mechanisms
- Remote unlock (manual or calendar-based)
- Unification of video protection
- Door layout on the map



Features

	Without Genetec SDK	With Genetec SDK*
Battery failure	Yes*	Yes*
Real-time events	Yes	Yes
Event-action mechanisms	Yes	Yes
Remote opening/closing	Yes	Yes
Open/close on calendar	-	Yes
Office mode	-	Yes
RFID Technology	CSN, MIFARE® (Classic, DesFire EV1 & EV2), LEGIC®** and EM/HITAG**	CSN, MIFARE® (Classic, DesFire EV1 & EV2), LEGIC®** and EM/HITAG**

* Genetec GSC-1SDK-ADDONXPRT-UZ license is required to use additional features

** integration on demand